

RETAIL BUILDING

933 S Western Ave, Los Angeles, CA 90006
932 S Manhattan Pl, Los Angeles, CA 90006

FOR LEASE

1,555 Sq. Ft.
AVAILABLE




S Western Ave (+42,150 VPD)

Mark Hong | CAL DRE 01067529 | 213-251-9000 | markhong@korusre.com
James Chin | CAL DRE 01974419 | 213-841-1078 | james@korusre.com

KORUS
REAL ESTATE



 ±9,557
VEHICLES PER DAY

W 9th St


 Bank of Hope
RODEO GALLERIA
SHOPPING CENTER

 BCD TOFU HOUSE 복합동순두부

WESTERN DISCOUNT
DEPARTMENT STORE

S Manhattan Pl

SUBJECT PROPERTY
933 S WESTERN AVE

 ±1,661
VEHICLES PER DAY

San Marino St

S Western Ave (±42,150 VPD)

 **KTP**
Koreatown Plaza



The information above has been obtained from sources believed reliable. While we do not doubt its accuracy, we have not verified it and make no guarantee, warranty or representation about it. It is your responsibility to independently confirm its accuracy and completeness.

933 S Western Ave & 932 S Manhattan Pl , Los Angeles, CA 90006

PROPERTY OVERVIEW

Address	933 S Western Ave 932 S Manhattan Pl Los Angeles, CA 90006
Lease Price	\$10,000 + NNN
Availability	±1,555 Sq. Ft.
Building Size	1,555 Sq. Ft.
Land Size	933 S Western Ave: 7,160 Sq. Ft. 932 S Manhattan Pl: 7,499 Sq. Ft. Combined Total: 14,659 Sq. Ft.
Built	1999
Parking	35 Spaces
Walk Score	Walker's Paradise (96)
Transit Score	Excellent Transit (74)

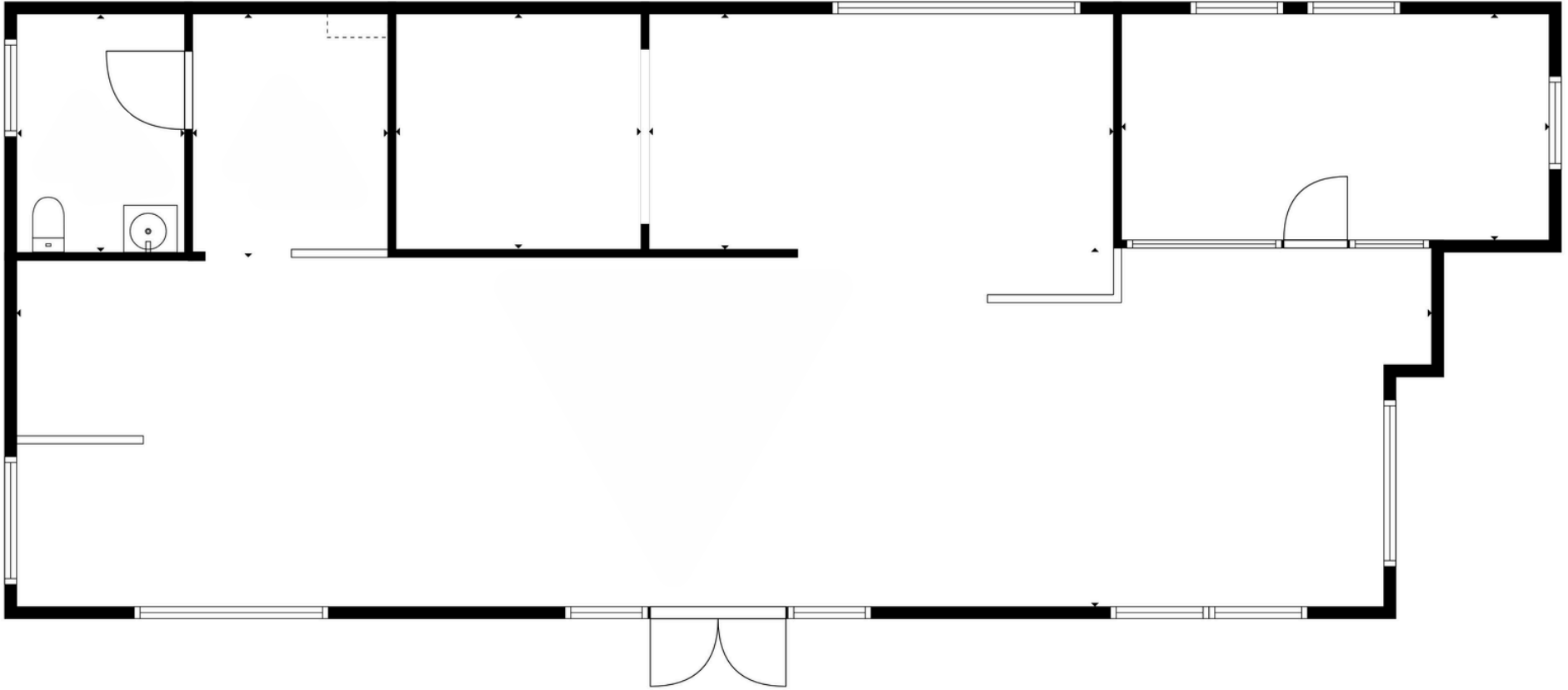
PROPERTY HIGHLIGHTS

- Freestanding single-tenant retail building.
- Directly across from the Koreatown Plaza.
- Signage on heavily trafficked Western Ave.
- Excess Parking, can be used for Auto Sales
- Approximately 610,806 residents within a three (3) mile radius.



933 S Western Ave & 932 S Manhattan Pl , Los Angeles, CA 90006

SITE PLAN- 932 S WESTERN AVE



AVAILABILITY ±1,555 Sq. Ft.

DEMOGRAPHICS

1 MILE 3 MILES 5 MILES



Population

2024 Estimated Population	97,985	610,806	1,224,255
2029 Projected Population	96,985	610,806	1,192,186
2020 Census Population	94,079	606,131	1,237,287



Households

2024 Estimated Households	40,887	242,054	498,431
2029 Projected Households	40,157	236,581	485,851
2020 Census Households	39,433	239,401	499,618



Income

2024 Estimated Average Household Income	\$69,383	\$77,204	\$88,553
2024 Median Household Income	\$47,861	\$52,797	\$60,439



The information above has been obtained from sources believed reliable. While we do not doubt its accuracy, we have not verified it and make no guarantee, warranty or representation about it. It is your responsibility to independently confirm its accuracy and completeness.

933 S Western Ave & 932 S Manhattan Pl, Los Angeles, CA 90006